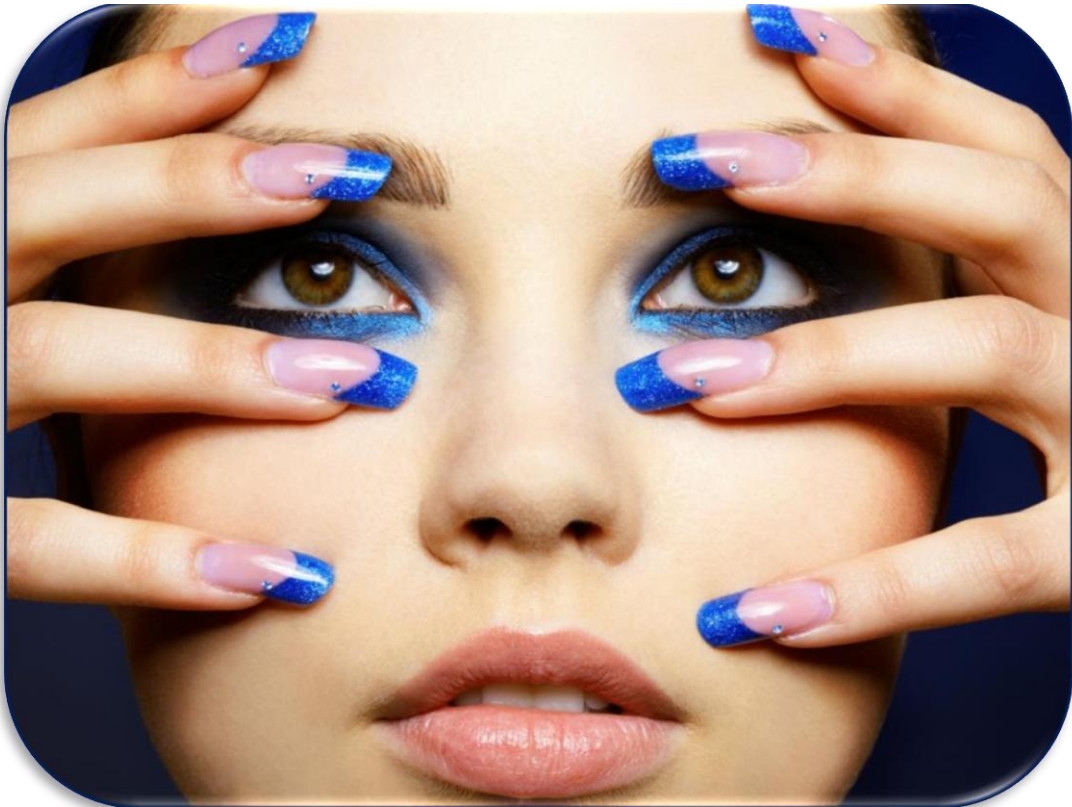




HELIA-D INTERNATIONAL
Health and Beauty Training College

FULL AND PART TIME PROSPECTUS

2012



CAREER OPPORTUNITIES

Choosing a career in Health and Skincare Therapy is best suited with Helia-D International. Campuses are located from Centurion, to Cape Town, Rustenburg and Klerksdorp in the North West. As a family orientated college, our learners are well educated, we offer personalised attention and offer courses that are fully accredited nationally by the Department of Education and internationally by ITEC. The programmes are taught by facilitators that are highly educated and experienced.

Our learners are sought after in the beauty industry!

OUR VISION AT HELIA-D INTERNATIONAL

“To Be The Best In Providing Quality Education Training, Practical Knowledge And Learner Satisfaction Leading The Way In The Development and Implementation of FET & HET Qualifications In the Professional Health And Skincare Therapy field”

Helia-D International has a national reputation for excellence in teaching and learning; we aim to build on this excellence, transforming our students' lives through knowledge.

THE HELIA-D INTERNATIONAL GRADUATE

The student experience at Helia-D International draws inspiration from the spirit of providing health and skincare to clients that marks our industrial heritage, and from its unique natural environment. We believe Helia-D International graduates will develop their potential, making a major contribution to the Health and Skincare Industry, business and society.

WE ARE COMMITTED TO DEVELOPING GRADUATES WHO:

Helia-D learners are ambitious and autonomous who possess not just higher academic knowledge but vast experiential training making learners fully employable in the health and beauty industry. They are confident, adaptable and capable of independent enquiry. The learners have a wide range of intellectual and key skills, and a reflective approach to learning. Are readily employable, and well-equipped, through direct work experience or volunteering, for lifelong learning and the professional world and are ready to take their place as active, co-operative and responsible citizens in local and global society.

THE HELIA-D INTERNATIONAL LEARNING COMMUNITY

At Helia-D International, we see teaching and learning as a partnership between staff and students, based upon co-learning, active participation and mutual respect.

THE COLLEGE WILL PROMOTE:

Helia-D International has a strong support structure in a friendly, caring learning community. An educational experience that responds to learners at all levels as individuals, enabling each to reach their full potential. We offer opportunities for staff and students to acquire subject knowledge and appropriate professional skills. There are opportunities for staff and students to develop employment and life skills in a community sensitive to environmental and social needs and committed to the principles of equality and diversity.

HELIA-D INTERNATIONAL ACCREDITATION

Helia-D International Health and Beauty Training College was founded in 1996 and is fully accredited nationally and internationally by SAQA, DoE & CHE and internationally with ITEC.

SAQA



SAQA - HELIA-D INTERNATIONAL DIPLOMA NQF 5 QUALIFICATION I.D. 57476

Accredited by SAQA (South African Quality Assurance) for full programme accreditation.

CHE /DOE

COUNCIL ON HIGHER EDUCATION



The South African **Council on Higher Education (CHE)** is an independent statutory body responsible for advising the Minister of Education on all matters related to higher education policy issues, and for quality assurance in higher education and training.

Helia-D International was registered and accredited by CHE in 2008. This allows the centre/college to educate learners in higher education.



DEPARTMENT OF HIGHER EDUCATION ACCREDITATION NUMBER - 2010/ HE07 /008

ITEC



INTERNATIONAL THERAPY EXAMINATION COUNCIL

ITEC is nationally and internationally accredited examining body in Health and Skincare Therapy Diplomas/ Modular Diplomas available. ITEC is established in over 30 countries worldwide and is an UK based company. ITEC certificates and diplomas offer excellent opportunities for employment for learners nationally and internationally.

WHY CHOOSE HELIA-D INTERNATIONAL

A training institute should offer safe and centrally located amenities. Learners are ensured safety through monitored gate controls and CCTV. Diplomas and certification is accredited by the South African government and internationally by ITEC.

LEARNING FACILITIES

We are located centrally in Randburg (near M-net). We are near all the amenities and bus routes for ease of transport for the learners. A Safe and tranquil environment is provided with CCTV and security. Parking for learners is available inside the premises. Learners receive individual attention throughout the entire year and are assessed according to the amount of learners and on an International level, on a continuous basis.

DIPLOMAS AND CERTIFICATES

Certificates and Diplomas are issued on completion of the course that includes the submission of all requirements i.e. Case Studies & Experiential Hours.



INTERVIEWS

Please phone for an interview to view our premises, curriculum and learn more about our exciting qualifications. Career opportunities that is available to the learners with our partnering salons and spas to for employment.

NATIONAL AND INTERNATIONAL JOB OPPORTUNITIES- HELIA-D ASSISTS LEARNERS WITH EMPLOYMENT AT ALL LEVELS

Helia-D International offer continuous placements of learners and qualified therapists with local salons and spa's, and also offers the opportunity to be interviewed and placed internationally with both STEINER Cruise Liners and DC International Recruitment Agency.



FACILITATORS AND ASSESSORS

We only employ highly qualified and expert facilitators with the required assessor's and moderator's qualification. Facilitators also have experience in both salon and teaching, increasing the benefit of higher education.

Please read through our program options and join a professional and committed institute of learning



HELIA-D INTERNATIONAL OFFERS FULL TIME COURSES IN THE FOLLOWING PROGRAMMES

- 1. HEALTH AND SKINCARE DIPLOMA NQF 5 - (2 YEARS) - FINAL REGISTRATIONS IN 2012**
- 2. DIPLOMA IN SOMATOLOGY NQF 6 (3 YEARS)**
- 3. HEALTH AND SKINCARE CERTIFICATE NQF 4 - (1 YEAR)**
- 4. BEAUTY SPECIALIST CERTIFICATION NQF 4 - (6 MONTHS)**

1. HEALTH AND SKINCARE DIPLOMA NQF 5- 2 YEAR COURSE

(2012 – 2013 WILL BE THE FINAL YEAR OF OFFERING THIS PROGRAMME AS PER THE NEW NQF)

Procedure Requirements for Learner Entry

1. Grade 12 or equivalent is the minimum qualification required for a prospective learner studying for a full time Helia-D International Diploma Two year programme.
2. Learners with an education achievement standard under grade 10 needs to have the minimum age requirement of 23 years with Literacy, communication and Numeracy skills equal to a NQF Level 4 certificate
3. Biology and science is recommended but not compulsory.
4. Computer literacy for research projects and personal skills are required for ease of learning.
5. Health and physical requirements are essential due to the amount of practical hours and training required.
6. Helia-D International assists all learners with disabilities. Refer Policy and Procedure for Disabled learners
7. An initial interview with the principal is required to provide verbal entrance requirements for the Helia-D International Health and Skincare programme.
8. English is the official language at Helia-D International therefore it is a compulsory learner entry requirement.

HEALTH AND SKINCARE DIPLOMA PROGRAMME – 1ST YEAR

Requirements for learner entry A 1-8 as stated above. This programme requires the non-refundable registration fee and deposits for prospective learners to be accepted for the course.

HEALTH & SKINCARE DIPLOMA – 1ST YEAR

Fundamental Subjects:

Special Skills, Business Awareness I, Salon Procedures and Techniques, Consultation and Client Care, Socio-psychology, Cosmetic Chemistry, Nutrition I, Physics, Anatomy & Physiology I, Dermatology, Professional Conduct, Advanced Aesthetic Treatments.

Core Subjects:

Skin & Eye Treatments with Eyelash and Brow Treatments, Skin Electrotherapy, Holistic Massage, Make-up artistry, Depilation, Manicure & Pedicure, First Aid.

The learners must complete **Experiential Training, Case Studies and can optionally choose Elective Subject/s that includes** Nail Technology including four systems silk, fibre, gel and acrylic. This course is not included in the price structure.

HEALTH AND SKINCARE DIPLOMA PROGRAMME – 2ND YEAR

Pre-requisites required: Health and Skincare Certificate / 120 credits. Helia-D International accepts learners from other colleges as portable credits. Recognition of prior learning is offered through entrance assessment. Credits and certification must be made available to the assessors.

HEALTH & SKINCARE DIPLOMA – 2ND YEAR

Fundamental Subjects:

Business Administration II, Anatomy & Physiology II, Nutrition II.

Core Subjects:

Body Therapy, Aromatherapy I, Reflexology I, Indian Head Massage, Hot Stone Therapy, Manual Lymph Drainage, Body Alignment and Movements (Exercise)

The learners must complete **Experiential Training, Case Studies and can optionally choose Elective Subject/s**

2. DIPLOMA IN SOMATOLOGY NQF 6 - 3 YEARS

LEARNERS THAT QUALIFY FOR NQF 6

ENTRANCE REQUIREMENTS A 1-8: NATIONAL DIPLOMA: SOMATOLOGY NQF 6

Persons applying must be in possession of a national senior certificate or equivalent.

1. Persons applying must have a prescribed medical stating that they have a clean bill of health.
2. Preference will be given to those students with Higher Grade Biology and/or Science at senior certificate level or natural sciences and/or physical sciences at national senior certificate level.
3. Admission dependent on results of Interview.



ENTRANCE REQUIREMENTS FOR APS SCORE

Learners accessing this qualification should be in possession of a National Senior Certificate, FETC, National Certificate Vocational Level 4 or equivalent NQF level 4 qualifications

Students, who register for this qualification, should have to a National Senior Certificate with exemption from the South African Matriculation Board or endorsement from the Board, certifying that they are eligible for diploma study at a tertiary institution. In the case of applicants not writing South African Senior Certificate examinations, such results are subject to verification before exemption can be obtained. A composite score called the Admissions Points Score (APS) based on NSC performance will be used with points calculated as follows:

Rating code; Rating Marks %:

Calculation of the APS score for entrance requirements							
APS Scale	7	6	5	4	3	2	1
Percentage	80- 100.	70-79.	50-69	50-59	40-49	30-39	0-29
	Outstanding achievement	Meritorious achievement	Substantial achievement	Adequate achievement	Moderate achievement	Elementary achievement	Not achieved

Life Orientation must be divided by 2 in the calculation of the APS score. The point's ratings for the 6 subjects required for the NSC, excluding Life Orientation, will be used in calculating the APS, which is

calculated as the sum of the 6 points ratings with no subject weighted more than any other. A Minimum point score of 24 or higher is required.

PART-TIME DIPLOMA IN SOMATOLOGY NQF 6 - PART TIME CLASSES

DURATION: 5 YEARS

LEARNER ENTRANCE REQUIREMENTS ARE THE SAME AS FOR FULL TIME

1. Part Time programmes require the registration fee, deposits and cash payments for prospective learners to be accepted for the course.
2. Recognition of prior learning through entrance assessment. Credits and certification must be made available to the assessors and RPL will be charged for as per RPL policy and Procedure.
3. Learners will be accepted and registered with above requirements as per full time requirements.
4. Classes will commence on Saturdays and Sundays as well as week nights as per the module subjects offered. A timetable will be made available to learners wanting to complete part time diplomas and certificates with Helia-D International.

EXAMINATIONS AT HELIA-D INTERNATIONAL

Learners that wish to do International examinations i.e. ITEC are to have the minimum of 60% pass rate for all Helia-D International examinations before entrance is allowed to the examinations. Helia-D International reserves the right to allow learners entrance to the examinations.

PAYMENT OPTIONS & PROCEDURES FOR DIPLOMA PROGRAMMES

Two payment options available:

OPTION 1: CASH PRICE

The learner has the option to pay the course in full, as follows:

- A non-refundable registration fee for Health & Skincare programs is required after being interviewed and accepted.
- A non-refundable deposit is required for Health and Skincare programs due by 1 November before the commencement of the programme for the following year.
- A discounted Cash price is to be received by no later than 01 February of the year of the programme. No exceptions will be made.
- **Foreign learners are required to select payment Option 1.**
- Contracts are due on enrolment to be signed by the person responsible for the account only.

OPTION 2: PAYMENT IN INSTALLMENTS FOR THE COURSE

The learner has the option to pay the course as follows:

- A non-refundable registration fee for Health & Skincare programs is required after being interviewed and accepted.
- A non-refundable deposit is required for Health and Skincare programs due by 1 November before the commencement of the programme for the following year.
- The balance of the outstanding installment amount is to be paid as installments over the ten months; (February – November are payable on the first day of each month – should the first day be either a public holiday or a Sunday, the installment is payable on the previous working day – bank-related finance charges are included in these fees.

3. HEALTH AND SKINCARE CERTIFICATE - 1 YEAR COURSE

Requirements for learner entry: Grade 10 / 11 /12

This programme requires the registration fee and deposits for prospective learners to be accepted for the course.

Programme outline:

1. **Professional Conduct & Business Awareness**
2. **Skincare & Eye Treatments**
3. **Manicure & Pedicure**
4. **Make-up Artistry**
5. **Depilation/Waxing**
6. **Anatomy and Physiology**
7. **Holistic Massage**
8. **Nail Technology** (Four systems silk, fibre, gel and acrylic)



The subjects included are described as follows:

Fundamental Subjects:

Special Skills, Business Awareness I, Salon Procedures and Techniques, Consultation and Client Care, Anatomy & Physiology, Dermatology, Cosmetic chemistry, Professional Conduct

Core Subjects:

Skin & Eye Treatments includes Eyelash and Brow Treatments, Holistic Massage, Make-up artistry, Depilation, Manicure & Pedicure & Nail Technology

Experiential Training:

120 Salon Hours must be completed for the Health & Skincare 1 year

Case studies for each core subject are done on premises with assistance of facilitators (minimum two afternoons /week)

4. ITEC BEAUTY SPECIALIST DIPLOMA – 6 MONTHS COURSE

Requirements for learner entry: Grade 10 / 11 /12. This programme requires the registration fee and deposits for prospective learners to be accepted for the course.



PROGRAMME INFORMATION

Course Content:

1. Professional Conduct & Business Awareness
2. Skincare & Eye Treatments
3. Manicure & Pedicure
4. Make-up Artistry
5. Waxing Level
6. Anatomy and Physiology



The subjects included are described as follows:

Fundamental Subjects:

Business Awareness I with Special Skills, Professional Conduct with Salon Procedures and Techniques & Consultation and Client Care, Applied Anatomy & Physiology I.

Core Subjects:

Skincare and Eye Treatments including Eyelash & Brow Treatments, Make-up artistry, Depilation (Waxing) and Manicure & Pedicure Treatments.

Experiential Training:

Case studies for each core subject can be done on premises with assistance of facilitators (minimum two afternoons /week). 80 hours salon experience is to be completed before examinations.

Case Studies are strictly required for entrance into the examination.

- On completion of the Beauty Specialist and requirements have been met the course will allow the learner to enter into the International ITEC Beauty Specialist Diploma exam in November/December.
- International examination fees are not part of the tuition fees.

- There are no compulsory pre-requisite subjects however, Biology and Science is recommended. Computer literacy for research projects and personal skills are required for ease of learning.
- Health and physical requirements are essential due to the amount of practical hours and training required.
- Please note that English is the official language at Helia-D, and therefore it is a compulsory entry requirement.

DATES AND TIMETABLES

Helia-D International offers the Beauty Specialist course over 6 months. The Dates for Courses available on request- Beauty Specialist Timetable

TUITION FEES

PROGRAMME	INSTALMENT FEES	CASH PRICE	KIT PRICE-Excluded in Fees
Beauty Specialist Certification	Registration fee R 1 000.00 – Non Refundable Deposit R 4 500.00 –Non refundable R 3 200.00 x 4 (Monthly) Total Price R 18 300.00	R 16 300.00	R 6 300.00 List of the kit items will be supplied. Helia-D International supplies Manuals. Specific items for the Uniform and Linen is included in the requirements

PAYMENT OPTIONS & PROCEDURES

There are two payment options:

OPTION 1: Cash Price

The learner has the option to pay the course in full, as follows:

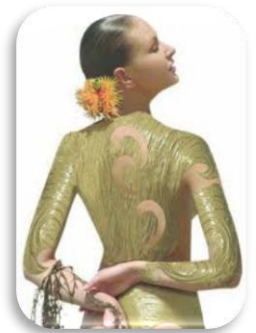
- A non-refundable registration fee is paid after being interviewed and accepted.
- A non-refundable deposit will be due for enrolment.
- The learner will be invoiced for the payment of the cash price and payment must be settled before the course commences
- All Foreign learners are required to select payment Option 1.

OPTION 2: Payment in Installments for the Course

The learner has the option to pay the course as follows:

- A non-refundable registration fee of R 1000.00 is paid after being interviewed and accepted.
- A non-refundable deposit will be due before commencement of the course.

- The balance of the outstanding amount may be spread over four months and are payable on the first day of each month – should the first day be either a public holiday or a Sunday, the installment is payable on the previous working day – bank-related finance charges are included in these fees.



PART TIME - MODULAR COURSES

Welcome to the world of Health and Skincare therapy, where you can make the world of difference in someone's life. Helia-D International offers Part-time courses in the evening from 5: 30- 8: 30 pm Monday to Thursday.

Objective: These courses are made available to the clients to acquire skills in the Health and Skincare industry on a part-time basis. Sites of Delivery: Helia-D has several accredited satellite branches in Rustenburg and Klerksdorp for part-time courses and has a joint venture with Healing Hands Academy nationally in Centurion and Cape Town.

Helia-D is proud to confirm that our lecturers are experienced in the industry and have obtained the highest qualification to lecture their knowledge and experience to learners. Case studies are required to ensure that practice is maintained and experiential hours are required for BSD /ITEC candidates to achieve the highest results in examinations.

WE ARE THE BEST AS WE OFFER YOU OUR VALUED LEARNER THE BEST!

Helia-D International part time Courses focus on the practical application of the chosen subjects e.g. manicure or waxing. The products you need for the course are listed and available on request, and the price of this 'kit' varies from course to course. Kits are only issued once fully paid for.

The Dates for the courses are as follows where a timetable is found as an appendix to the outline of the courses.

NOTES TO PROSPECTIVE LEARNERS:

These courses are designed for the following:

- Ages from 16 with a minimum of Grade 10 who wish to study and find employment in beauty salons
- Beauty Consultants/Over-the-Counter Consultants that deal with clients that require training in products.
- Pamper Party Consultants for clients that wish to have treatments done on them
- Homemakers who wish to expand their horizons into the beauty industry, without the stress full time studying.
- Change in career and continue in Health and skincare
- Earn extra income on a part-time basis

GENERAL COURSE INFORMATION

- All units for the program must be completed by the learners to qualify for entrance into the International Examinations. More information is available from the office on subjects that is required as prerequisites or equivalent thereof.
- It is compulsory for candidates to complete the required amount of case studies for relevant subjects, achieve a 60% pass for practical and theory, before certification is issued by the college.
- Lectures and practical sessions take place each evening of the week, from Monday to Thursday.
- A different subject is offered each night of the week, and students only come to College one evening per week per unit/subject.
- Each session lasts three hours, from 5.30 pm to 8.30 pm.
- Please note that a minimum of 4 candidates per course is required for the College to present the module.
- Candidates may not be absent from more than 2 sessions per course, as this will result in no entry to examinations.
- Should a learner fail to attend the final examination, the learner will be entered into the final examination of the next applicable course with compulsory attendance to the mock examinations.
- Should a learner fail the theory exam, a rewrite exam will be set free of charge the first time and can be scheduled with the principal of the college. A charged of R 200.00 per paper will be charged for each rewrite thereafter.
- Should a learner fail the practical exam, a re-sit will be scheduled with the final exam for the next applicable course. It will be compulsory for the learner to attend session 8 and the mock exams in order to re-sit the final practical. A fee will be charged for re-sits of practical examinations.
- The uniform for part time learners required is as follows:

- Black slacks with flat, black shoes (no flip flops), white blouse/T-shirt and Helia-D International tabard.
- There is parking for learners available on premises. We are located centrally in Randburg (near M-net), near all the amenities and bus routes for ease of transport for the learners.

PAYMENT POLICY AND PROCEDURE

NON-REFUNDABLE REGISTRATION FEE:

- a) **R 350.00 is charged per module**
- b) **Registration for the Beauty Specialist Course (BSD) is R 1000.00.**

This fee covers all general administration that includes report cards, etc and is not refundable. Registration must be paid for each subject individually.

- **Product training is available to Part-time learners if they wish to attend the training during the day**
- **First Aid course is required when learners completing a BSD. Learners can join our full time First Aid course offered at the quoted price.**
- **Case Study timetable is available to part time learners to complete on the premises.**
- **80 Experiential Hours required for BSD as entrance for exam**

PRODUCT KIT FEE

Price varies from course to course and is NOT included in the course fee. Prices are subject to change due to supplier increases. Kit lists are available on request.

COURSE	PRICE	ANATOMY LEVEL REQUIRED FOR ITEC AND HELIA-D	ITEC ENTRANCE REQUIREMENT	TIMES	WEEKS
Skincare & Eye Treatments (Facials)	R 4000.00	Anatomy Level 1	BSD	5-30 -8-30 pm	12
Manicure & Pedicure Therapy	R 3 300.00	Anatomy Level 1	BSD	5-30 -8-30 pm	10
Make-up Artistry	R 3 300.00	Anatomy Level 1	BSD	5-30 -8-30 pm	10
Waxing Treatments	R 3 300.00	Anatomy Level 1	BSD	5-30 -8-30 pm	10
Holistic Massage	R 3 300.00	Anatomy Level 1 & 2	ITEC entrance requires Level Anatomy and Physiology 3 with Professional Conduct & Business	5-30 -8-30 pm	10
Nail Technology	R 6000.00 (Kit Inclu)	Not applicable	Manicure & Pedicure, Professional Conduct and Business, Nail art	5-30 -8-30 pm	11
Anatomy Level 1	R 3 600.00	Not applicable		5-30 -8-30 pm	11
Anatomy Level 2	R 3 300.00	Not applicable		5-30 -8-30 pm	10
Anatomy Level 3	R 3 600.00	Not applicable		5-30 -8-30 pm	11

We have other exciting courses available for qualified therapists or updated courses:

Prices and kit/product requirements are available on request. Please note the prerequisites for each of the listed subjects where applicable.

- Professional Conduct and Business Awareness
- Anatomy & Physiology

Learners who have successfully passed Anatomy Level 1 examination can enter into Level 2 and then 3 for Helia-D and ITEC examinations designed for those students who wish to further their education and learn the in-depth theory related to the subject. It takes estimated 10 weeks to complete each level.

HOLISTIC HEALTH COURSES ON REQUEST

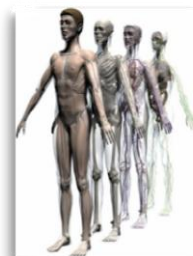
- Indian Head Massage
- Hot Stone Massage
- Baby & Pre-natal Massage
- On Site/Stress Management
- Sports Massage
- Reiki



- Acupressure
- Thai Foot Massage
- Lomi Lomi (Hawaiian) Massage

ANATOMY AND PHYSIOLOGY REQUIREMENTS

The Anatomy & Physiology course covers all the important aspects required for Aesthetician level/ Beauty Specialist AND Holistic massage. After completing these sections of the course, the learner qualifies to enter the ITEC Beauty Specialist Diploma Examination, provided that an average pass mark of 60% has been achieved in the College tests, the examination and Case Study submission of relevant practical subjects.



- **Anatomy Level 1** is for all candidates who enter into **BSD ITEC**: a complete manual level 1-3 is available for purchase, not included in the course fee.
- **Anatomy level 2 and 3** to enter into ITEC **Diploma in Holistic Massage** candidates must complete: All three (3) levels of Anatomy together with Professional Conduct and Business as well as First Aid Level 1.

PROFESSIONAL CONDUCT & BUSINESS AWARENESS

The Professional Conduct and Business Awareness give a basis for completed core subjects and allow the learners to enter the ITEC Beauty Specialist Diploma Examination. Professional Conduct and Business Awareness cover 30 hours of tuition and form the foundation of all core subjects.



THEORY COURSE OUTLINE:

This subject teaches learners how to design, set-up and run a business professionally.

MANICURE & PEDICURE

The word manicure means 'Care Of the Hands', and the purpose of this treatment is to improve the appearance of the hands and nails, by cleansing, nourishing and beautifying them this is to include the feet.



THEORY COURSE OUTLINE

Basic theory regarding the Manicure & Pedicure treatments including Hygiene & Sterilization

PRACTICAL COURSE OUTLINE

Practical step by step on the Manicure & Pedicure treatments including specialized spa treatments

CASE STUDY REQUIREMENTS

Case studies must be completed and found competent before certification is provided.



WAXING TREATMENTS

Basic theory regarding the Waxing treatments including Hygiene & Sterilization

PRACTICAL COURSE OUTLINE

Practical step by step on the Waxing treatments including Brazilian Waxes and Melinda wax product training taught by Melinda.

CASE STUDY REQUIREMENTS

Case studies must be completed and found competent before certification is provided.



SKIN CARE AND EYE TREATMENTS COURSE INCLUDES EYE LASH AND EYEBROW TINTING

SKIN CARE AND EYE TREATMENTS COVERS 12 LECTURES.

After completing Anatomy and Physiology 1 of the course outlined above, the learner is qualified to enter the ITEC Beauty Specialist Diploma Examination, provided that an average pass mark of 60% has been achieved in the College tests, the examination and Case Study submission – further information available from the College.



THEORY COURSE OUTLINE

Basic theory regarding the Skin & Eye treatments including Hygiene & Sterilization and specialized masks.

PRACTICAL COURSE OUTLINE

Practical step by step on the Skin & Eye treatments including facial massage eyebrow shaping & tinting

CASE STUDY REQUIREMENTS

Case studies must be completed and found competent before certification is provided.

MAKE-UP ARTISTRY

In the consumer market, a makeup artist must understand colour and skin tone in order to match each customer with the right makeup. At Helia-D International, make-up is educated with the focus for artists to correctly analyze the needs of the client as well as taking in consideration the skin tone/colour, event and accessories.



THEORY COURSE OUTLINE

Basic theory regarding Make-up artistry, including Hygiene & Sterilization.



PRACTICAL COURSE OUTLINE

1. Day make-up
2. Evening make-up
3. Bridal make-up
4. Make-up for mature clients

CASE STUDY REQUIREMENTS

Case studies must be completed and found competent before certification is provided.

HOLISTIC MASSAGE COURSE

Massage is often called soft tissue manipulation. Soft tissue is a general term to cover all the superficial tissues other than bone, i.e. skin, fat, muscle and other connective tissue such as ligaments and tendons that may be affected by massage.

The hands are very sensitive and dextrous parts of the body so that while they are performing massage strokes they will also be receiving information about the body being worked on – information such as the temperature of the body, texture of the skin, firmness of the muscles, the relative thinness or fatness of the body and of course whether the hands are working on bony or soft tissue.



THEORY COURSE OUTLINE

Basic theory regarding the massage treatments, including Hygiene & Sterilization.

PRACTICAL COURSE OUTLINE

Practical step by step on the Massage treatments.

CASE STUDY REQUIREMENTS

Case studies must be completed and found competent before certification is provided.

NAIL TECHNOLOGY

Specialized nail course, training the learner in four systems: Gel, Acrylic, Fibre and Silk.

COURSE OUTLINE

The basic theory of the application of artificial nails and the products & ingredients. The practical application of the acrylic, gel, silk & fibre systems, including the maintenance & repairs thereof.

CASE STUDY REQUIREMENTS

Case studies must be completed and found competent before certification is provided.



ITEC INTERNATIONAL

In order for learners to obtain the ITEC Beauty Specialist Diploma, it will be compulsory to enter into these exams at an additional cost which will be available on request.

HELIA – D INTERNATIONAL

Learners will receive certification for each subject completed. Helia-D is nationally recognised and accredited as required.

KITS & CONSUMABLES

Learners entering into this modular course have to purchase their own kit, linen and consumables as per the list provided.

UNIFORM

For BSD learners only: T – Shirts X 2-Provided and included in course fees. Uniform for individual modules for learners are own Black and White pants and blouse with Tabard (To be Purchased).

Join a professional and committed institute of learning where students achieve and succeed.

-Helia-D International

WHAT YOU NEED TO DO TO ENROL



- 1. Complete the Learner Registration application form**, when you have decided upon a course/s that you would like to attend. Attach **a copy of your identification document** for administration purposes.
- 2. Pay the registration R 350.00 course fee in total to start the courses. No instalment options for modular part time courses.**
- 3. Fax the proof of payment** to (011) 789 7796 / 086 503 1608 with your enrolment form and copy of ID.
- 4. Kits must be ordered two weeks before commencement of the course.** Since practical sessions start on the 2nd lesson, kits must be paid for before the first session in order for kits to be issued.

Please note that the prices on the kit lists are subject to change and therefore the office require for the applicant to fill out the order form on which a pro forma invoice will be returned to indicate the exact amount. Please ensure that your contact details are on the kit list in order for the office to send the pro forma. Please note that there are separate Banking accounts for Tuition fees and the kits that are ordered!

BANKING DETAILS FOR TUITION FEES ONLY:

ACCOUNT NAME:	HELIA-D INTERNATIONAL
STANDARD BANK:	KLERKSDORP BRANCH
ACC. NO:	030 660 491
BRANCH CODE:	052-638

BANKING DETAILS FOR KITS AND PRODUCTS ONLY:

ACCOUNT NAME:	SALON SETUP HELIA –D DISTRIBUTION
STANDARD BANK:	KLERKSDORP BRANCH
ACC. NO:	030693063
BRANCH CODE:	052-638

We trust that you will enjoy your training at Helia-D International Health & Beauty Training College, and look forward to meeting you.